

The background features several overlapping, stylized golden shapes that resemble petals or leaves, each filled with horizontal lines. A thick, solid golden horizontal bar runs across the middle of the page, serving as a backdrop for the main title.

SGP PROPULSION

Design | Build | Deliver

Company Overview

SGP Propulsion is currently a leader in the manufacturing, design and supply of world-class marine propulsion system. We're maintaining steadily our leadership in this field since our inception in the year of 1976. Our more over 40 years of successful tenure working for marine industry with utmost commitment is a significant proof in this context. We produce, design and reconstruct propulsion systems using expertise and up gradation of the latest technologies. We constantly exceeding the expectations of our customers through coming up with the best output according to the customer needs and interests besides strictly adhering well to the industry standards too. Our success and acquired leadership in the field definitely belongs to our team of expertise, advanced machinery, innovative & latest software technologies and the experienced workforce. We're truly motivated through the encouragement of our customer base and it is the hallmark of our customer driven culture too.



Vision:

Our vision is maintain steadily our acquired leadership in the field through enhancing and expanding our production facility, introducing the new generation of marine propulsions & through providing the better than best to our customers all across the world.



Mission:

Our mission is always to ensure utmost satisfaction to customers and to keep up their confidence intact over us through fulfilling well their better interest within our products and services. We're determined to provide the wide range of world-class marine propellers, ship spares, and many more with utmost customization, precision based designing added with manufacturing, flawless quality, strict adherence of standards and constant customer support in a way everything would be at its best for our customers.



Contents

Stern Gear Assembly	02-05
Tail Shaft Assembly:	06-07
Propellers	08-13
Rudder Assembly	14-15
SGP Nozzles	18-19
Hub Bore Dimensions	20-00
Naval Stern Tubes	00-21
Hydraulic Steering System with Auto Pilot	22-00
Tunnel Thrusters	00-23
P & A Brackets	24-00
Facility	21-23
Contract Manufacturing	24-27

Stern Gear Assembly: For High Performance Yachts & Commercial Vessel

SGP is capable to supply all types of Stern Gear Systems related to shafting arrangements those are designed as per customer instructions and specifications. Here, a special care and attention is always paid by our team about its hull design, type of vessel and desired engine performance keeping in mind the vessel type like wood, steel, fiber or aluminium. The range of material used for stern tube manufacturing is as non-ferrous brass tube, GRP tube and carbon steel tube. These tubes are also made available to supply in wide range of sizes to suit well to the customer needs.

Custom Built Stern tube Assemblies;

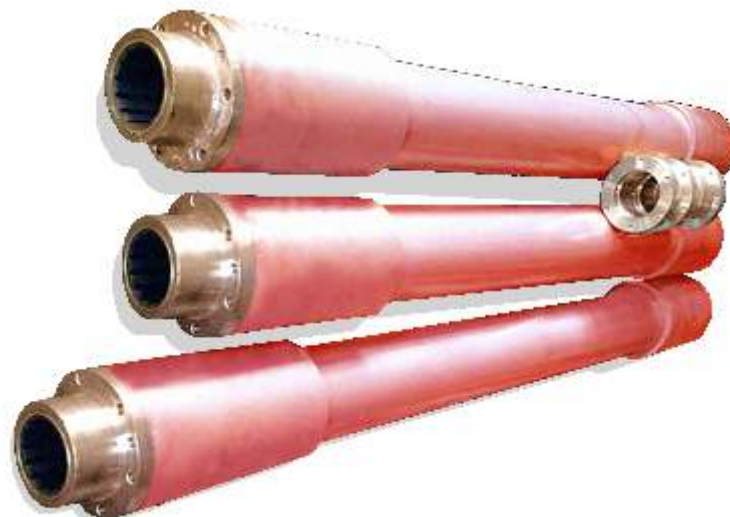
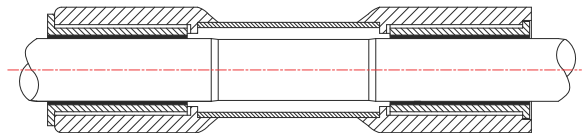
Oil Lubricated Stern tubes with White metal lined bearings:

Oil lubricated stern tubes are specially designed for steel vessel which are welded directly to hull.



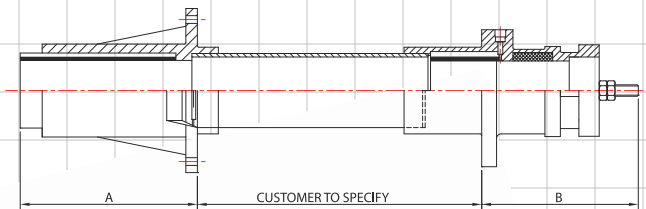
Water Lubricated bearing steel stern tube

Water lubricated stern tube are directly welded in to hull & material used is stainless steel 304 or 316 grade & it requires very low maintenance.



Bronze Water Lubricated Stern tube

These types of stern tube are mainly used for fishing boats & yachts. Depending on the application, a water inlet, usually connected to the engine cooling system can be set up on the tube close to the seal. This mounting is used when the engine / gearbox are mounted on soft pads, and there is no need for intermediate bearing between the rear bearing and coupling.

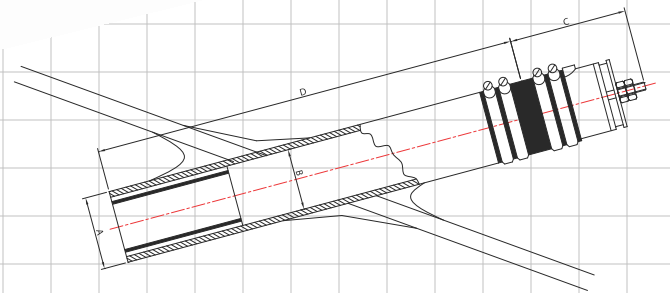


TYPE- 'H'



GRP Stern Tube Assembly:

These types of stern tubes are usually used in High speed yachts, High speed ferry boats & passenger vessel where an intermediate bearing is may required or not required. It includes a GRP tube, flexible gland and water lubricated bearing bush. Further we provide New Zealand make Kiwi Shaft Seal along with GRP Tube which is the ultimate solution for vessel & crew safety.



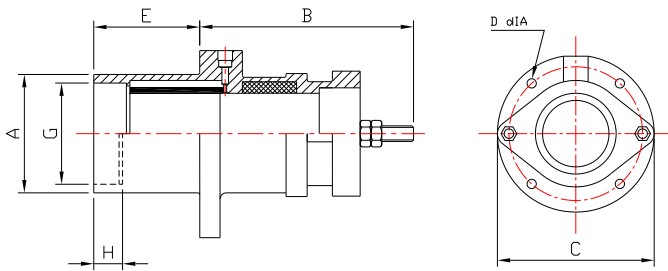
TYPE 'A'



Henleys Driveline GRP Stern Gear Assembly
with Kiwi Shaft Seal

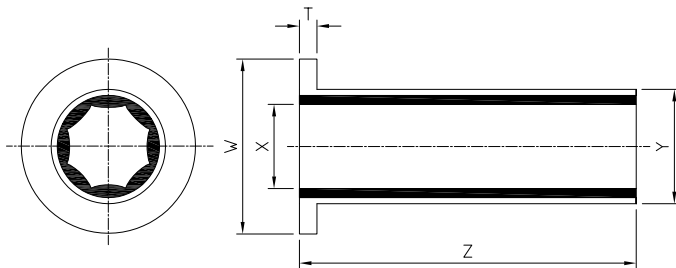
Cutless Bearings: Water Lubricated Marine Bearings :

Water Lubricated bearings are designed to ensure high resistance to abrasion & providing effective noise & vibration damping. Further it provides optimum lubrication & better performance & life. These bearings are mainly manufactured with the combination of naval brass or non metallic phenolic resin & tough nitrile rubber.



Flanged Bearings:

Flanges Bushes are manufactured in naval brass & high quality nitrile rubber. These are mainly used in Steel stern tube & 'A' bracket housing.



Thordon Bearing:

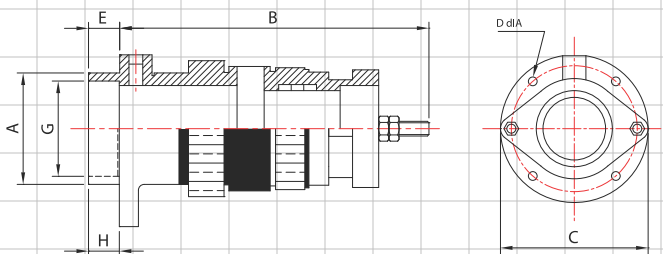
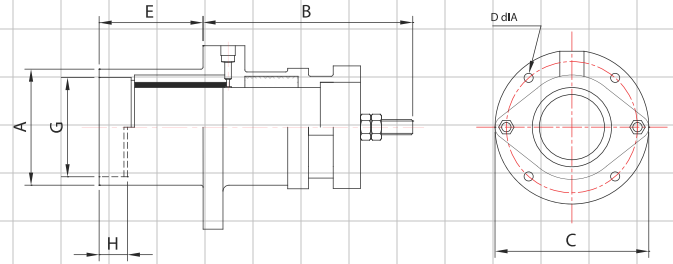
This type of bearings is better alternative for conventional Bronze bearings. These are auto lubricant, Provide very low friction, long life & lightweight for easy handling.



Shaft Glands :

Water Lubricated Gland:

The water lubricated gland is required where an intermediate bearing is required on the inboard end of the stern tube. The gland is mainly casted from Gun Metal.

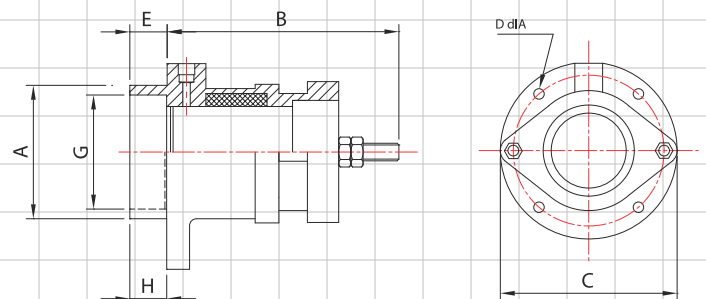


Inboard Flexible Gland:

This type of is used where the engine is not flexibly mounted. The flexible gland assembly is manufactured in Gun metal & Lg2.

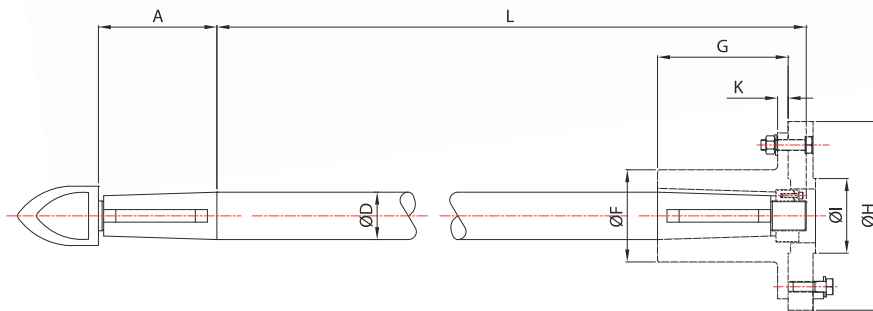
Grease Lubricated Gland:

The grease lubricated gland is a main support bearing for shaft and is used where a bearing is required on the inboard end of the stern tube.



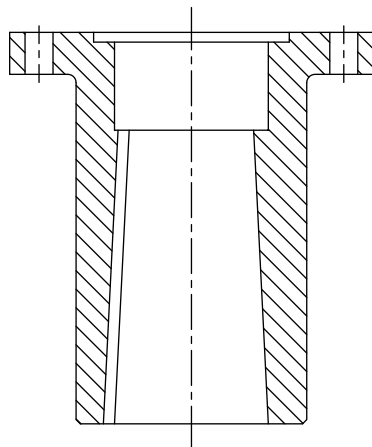
Tail Shaft Assembly:

SGP provides Shafts in a wide range of Alloys which are depends upon strength & corrosion required. SGP also provides High strength Duplex Stainless Steel Shafts. Shafts are precision straitened & CNC machined on our lathe having shaft length up to 6 meters. Our entire shaft Assemblies are supplied completely with keys, nuts, Couplings & cone nuts.



Couplings:

The shaft couplings are manufactured in forged steel. The couplings are supplied & machined to match the gearbox output flange.



Tail Shaft Assembly Complete with Coupling, Keys & Nut



KIWI SHAFT SEAL FOR SGP: New Zealand Designed, Manufactured & Tested

The fully monitored stainless steel shaft seal offers maximum protection for your vessel keeping your crew safe & dry. The design consist of a single piece of stainless steel housing with a single lip seal configuration which results in no maintenance, completely rebuild able & safe seal. The Kiwi Shaft Seal comes with dash Mounted warning system that activates before seal is compromised due to lack of coolant. The KIWI shaft seal is breakthrough alternative to stuffing Box and mechanical type glands.



ISO FLEX FLEXIBLE COUPLINGS: Designed & Manufactured in Australia

IsoFlex Flexible couplings provide a sacrificial link that is designed to fail before any gearbox damage occurs. IsoFlex coupling assist engine mounts to do their job by allowing controlled engine movement to isolate vibration controlled engine movement to isolate vibration and helping to alleviate thrust-induced drive line misalignment.

Features:

- Enhances drive bearings service life by reducing wear, resulting in lower long term cost of ownership
- Prevents distortion from thermal expansion, maximizes dimensional stability and minimizes run out.
- The possibility of insert turning in the coupling is minimized.
- Result in a quieter and smother operation experience, with less equipment fatigue, maintenance and associated noise.
- Saves the driveline and mounts from damage in many cases.
- Easy to install: No cutting is required, and vessel can remain in the water.



Solely Distributed & Marketed by SGP in India & Middle East

SGP PROPULSION

rahul.patil@shreegajanan.co.in/vivek.patil@shreegajanan.co.in/rodney@sgppropulsion.com

Propellers: For High Performance Yachts & Commercial Vessels

SGP made its greatest foothold through its expertise in designing the customized propellers as well as commercial propellers for the high performance yachts and super yachts. Today, SGP has grown to a capacity to produce propellers up to a weight of 6 tons and up to the diameter of 5 meters in bronze alloy. This entire credit goes to the SGP's expertise and latest propeller designing software from Hydro-Comp. Importantly, these high capacity propellers are made totally free from cavitations, noise, and vibration and in turn the ship will achieve desired speed quite flawless.

The overall designs of these propellers are carried out in-house keeping in mind the purpose and adequate knowledge in turn to deliver the highly valuable output to all our customers from our main office.

Super Cupped Propellers: This is the curve in the trailing edge of the propeller blade that extends from the hub to the tip. This technique is used to enhance the performance of propeller in terms of speed & fuel economy for High Performance Ferry Boats.



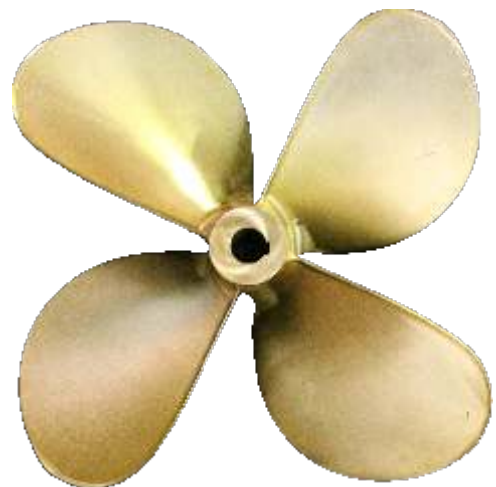
Dia 32''x pitch 22''x 4 Blade, DAR 0.65%,
to obtain speed up to 25 Knots



Dia 39''x Pitch 46''x 4 Blade, DAR 0.90%
to obtain speed of 30 knots



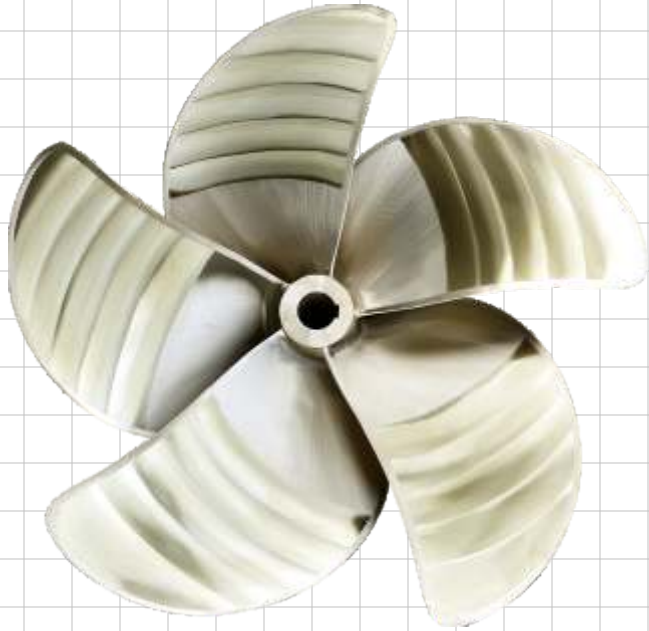
Dia 35''x pitch 39''x 4 Blade, DAR 0.100%,
to obtain speed up to 35 Knots



Dia 39''x Pitch 42''x 4 Blade, DAR 0.65%
to obtain speed of 26 knots

S Class Propeller For High performance Yachts and Cupped Propellers::

We design S Class & Cupped propellers for specific vessel & engine combination to meet optimum performance. These propellers are completely CNC machined to obtain finish tolerance to ISO Class I or S possible with high standard accuracy. The section and blade area ratio will be optimized to reach the lowest noise and vibration levels.



Dia 38''x Pitch 36''x 5 Blade,
DAR 0.75% to obtain speed of 30 knots



CNC Machining Center for
S Class Propeller Machining

Commercial Propellers:

Custom Build Propellers: Custom designed propellers provide significant benefits for vessels with maximum speed over 25 knots. It provides more efficiency, low vibration/noise and cavitations erosion.



Optimum Performance, Noise Reduction & Fuel economy
For Bulk carriers, coasters, inland water barges, trawlers, fast ferries, offshore supply vessel, tug, yachts & Naval vessels.



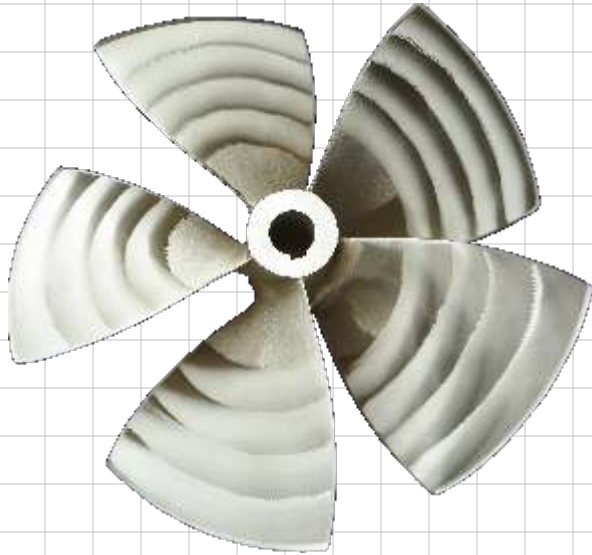
Propeller Grinding up to Dia 4.2 MTR
for Oil Tanker

High Skew Propeller Dia 34'' x Pitch
30'' x 4 Blade DAR 0.60%



Propeller Dia 38'' x Pitch
34'' x 4 Blade DAR 0.55%

Kaplan Propeller: The Kaplan propeller is designed for hard working Trawlers, Draggers and Tugs. Kaplan is available in NiBrAl, Manganese Bronze or Stainless Steel alloys. Kaplan Propeller is designed to be used with a nozzle in order to give shrimpers & workboats more thrust by considerably increasing the efficiency of propellers carrying heavy loads at low speed. Typically Kaplan Propellers with Nozzles derive 25-30% greater thrust for Trawlers and Draggers, while harbor tugs can easily deliver 30-40% more thrust versus open or free propellers.

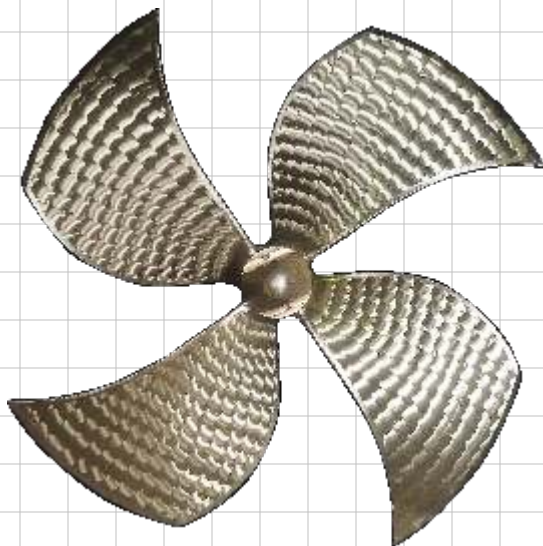


Dia 900mm X Pitch 636mm x
4 Blades for workboats



Dia 2 Meter Kaplan Propeller
for workboat & tug Boat

High Skew Kaplan Propeller: This type of propeller provides silent & vibration free performance. Better distribution of blade stresses result in lower engine power demand. Normally these are designed for cruises & very expensive yachts.



Dia 2.2 Meter Kaplan
High Skew Nozzle Propeller for Tug Boat



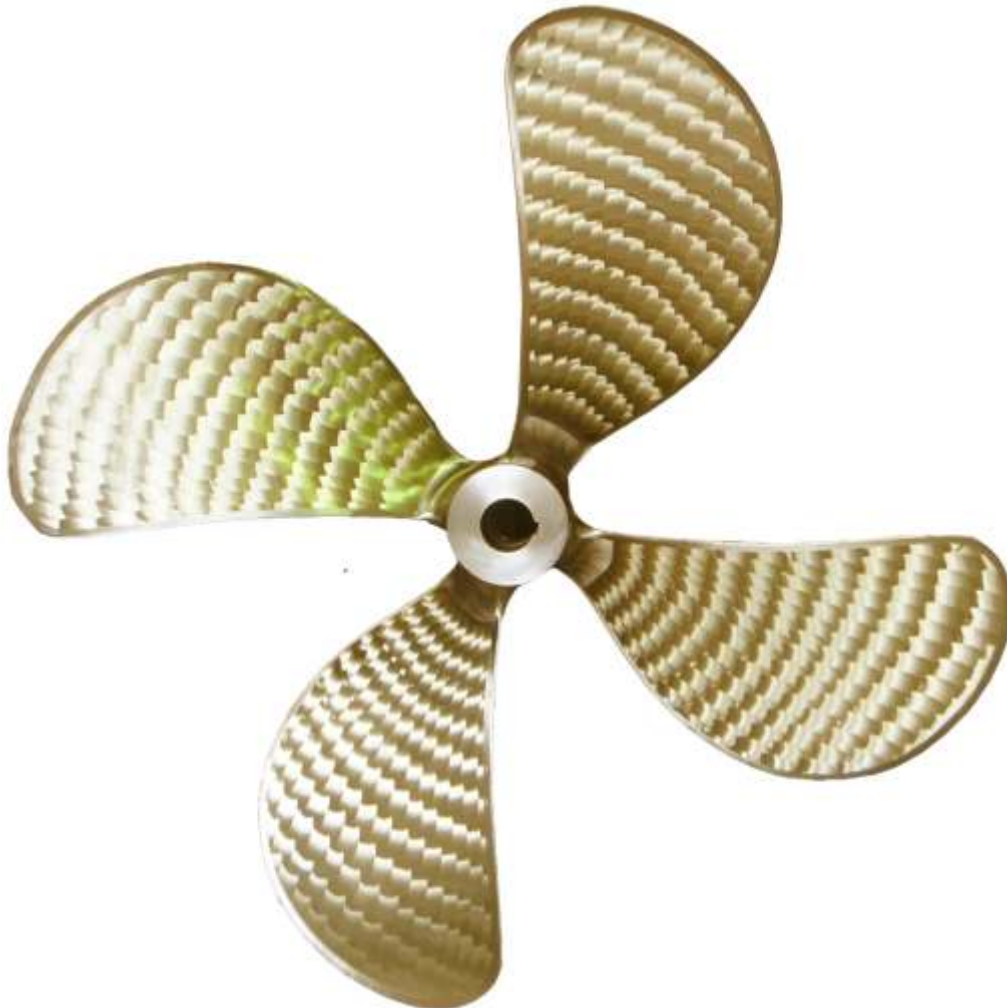
CPP Blades:

We design & manufacture CPP blades for most of the commercial vessels like ferries, tankers, supply vessels, dredgers & super yachts. We design CPP blades as per customize requirements. The blades can be manufactured in alloys nickel aluminium (CU3, CU4), Bronze and manganese Bronze (CU1).



FPP Propeller:

Dia 2.3 Mtr Propeller for fishing vessel manufactured under DNV GL Class



Complete Robotic Grinding & Polishing System for Propeller up to 2.5 Mtr

Capabilities:

- 7 Axis Complete Propeller Machining & Grinding Solution
- Custom & S Class Propellers with fine Precision
- Replacing the loopholes of traditional Manual Grinding
- 3D laser measuring protocol to measure produced model with high resolution & accuracy allowing Quality Control & Assurance.

Benefits:

- Higher Productivity – Production rate increases up to 300%
- Improved Productivity & Consistent Quality
- Heavy Stock Removal
- Flexible Solution
- Eliminate Health Hazard
- Comply with Global Manufacturing Practices

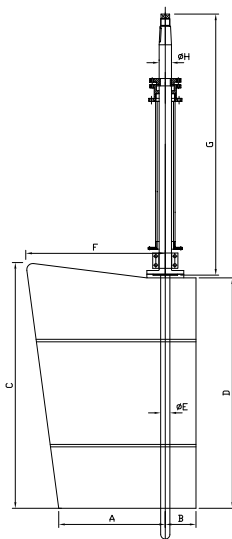


Rudder Assembly: For High Performance Yachts & Commercial Boats

SGP is reputed and reliable manufacturer of large number of rudders to suit well for individual hull from low speed displacement boats to high speed boats. Our specialty is to provide the best combination rudder for the best optimized results like performance and output.

Custom Rudders:

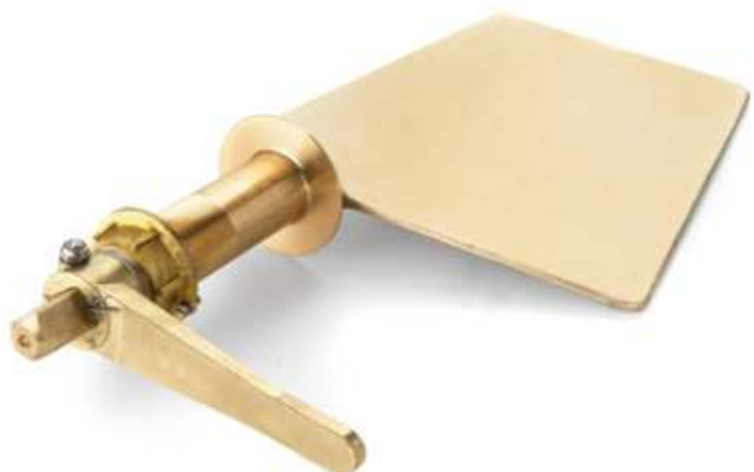
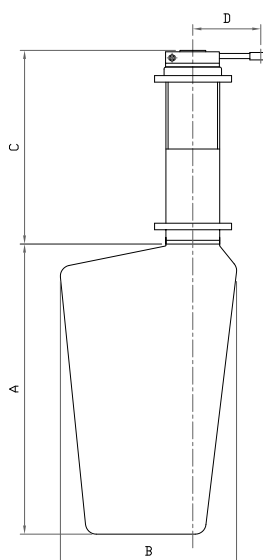
This are customized designs as per the requirements of vessels such as trawlers, fast patrol boats, tugs size more than 25meters, barges & workboats. These are fabricated in stainless steel or mild steel.



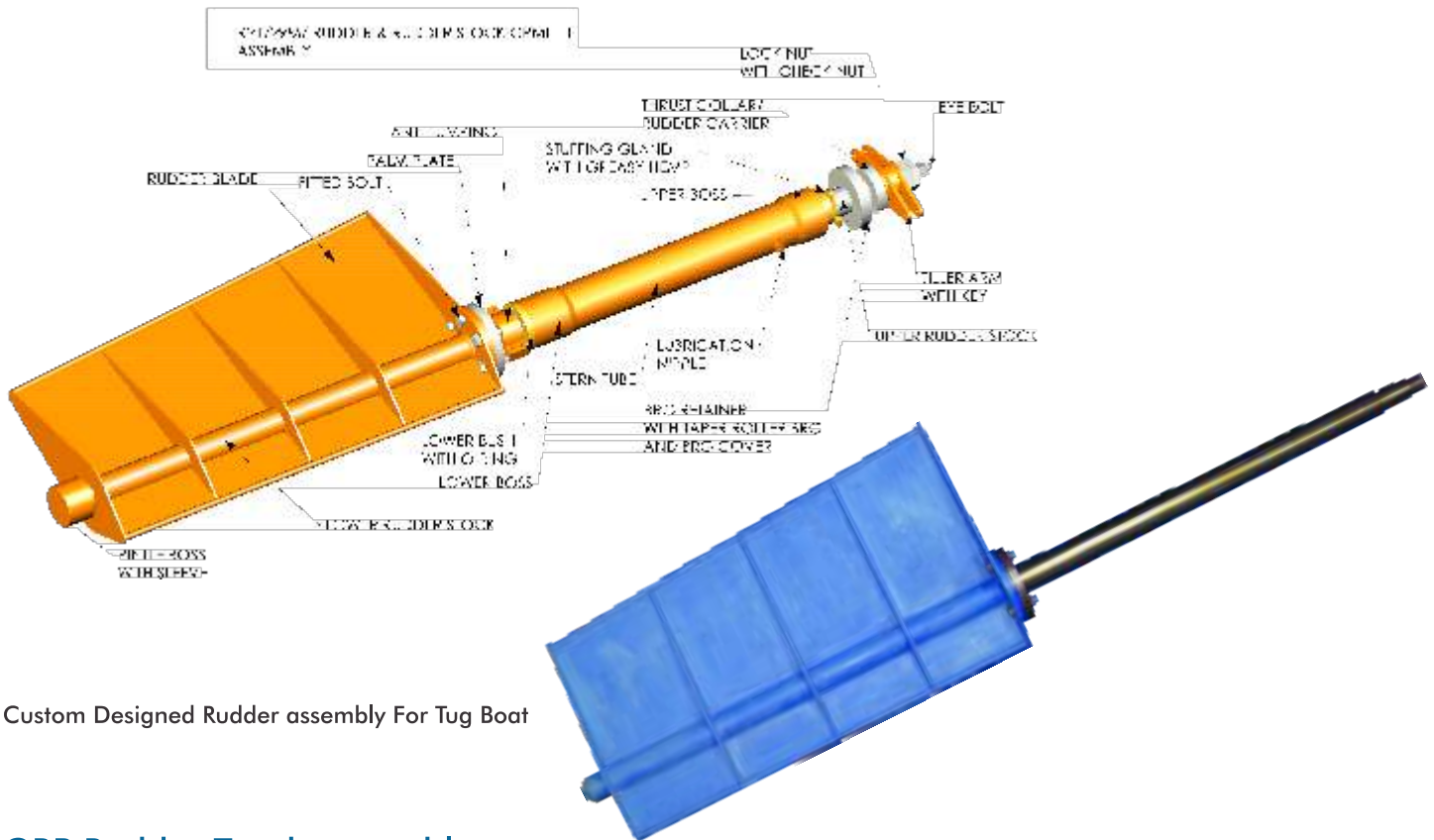
Henleys Driveline
Rudder Assembly with
Kiwi Shaft Seal

Bronze Rudder Trunk Assembly:

These rudders are generally casted in one piece either in nickel Aluminum bronze or Manganese Bronze.



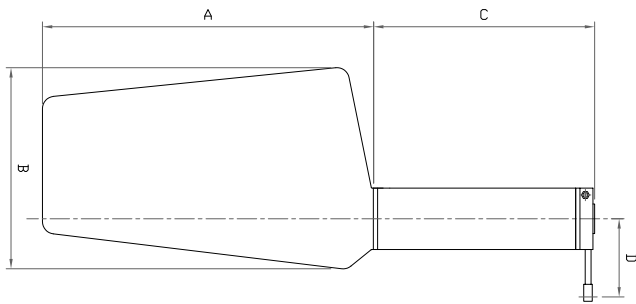
Fabricated Forged Steel Rudder for Twin Screw Tug Boat vessel



Custom Designed Rudder assembly For Tug Boat

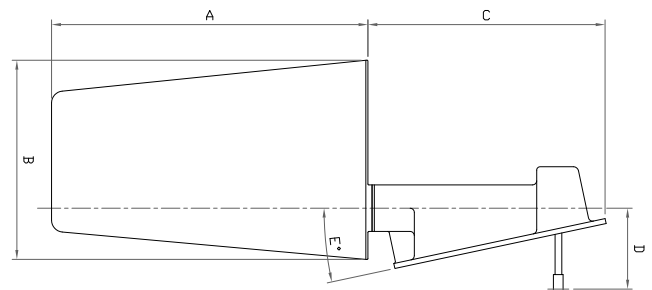
GRP Rudder Trunk assembly:

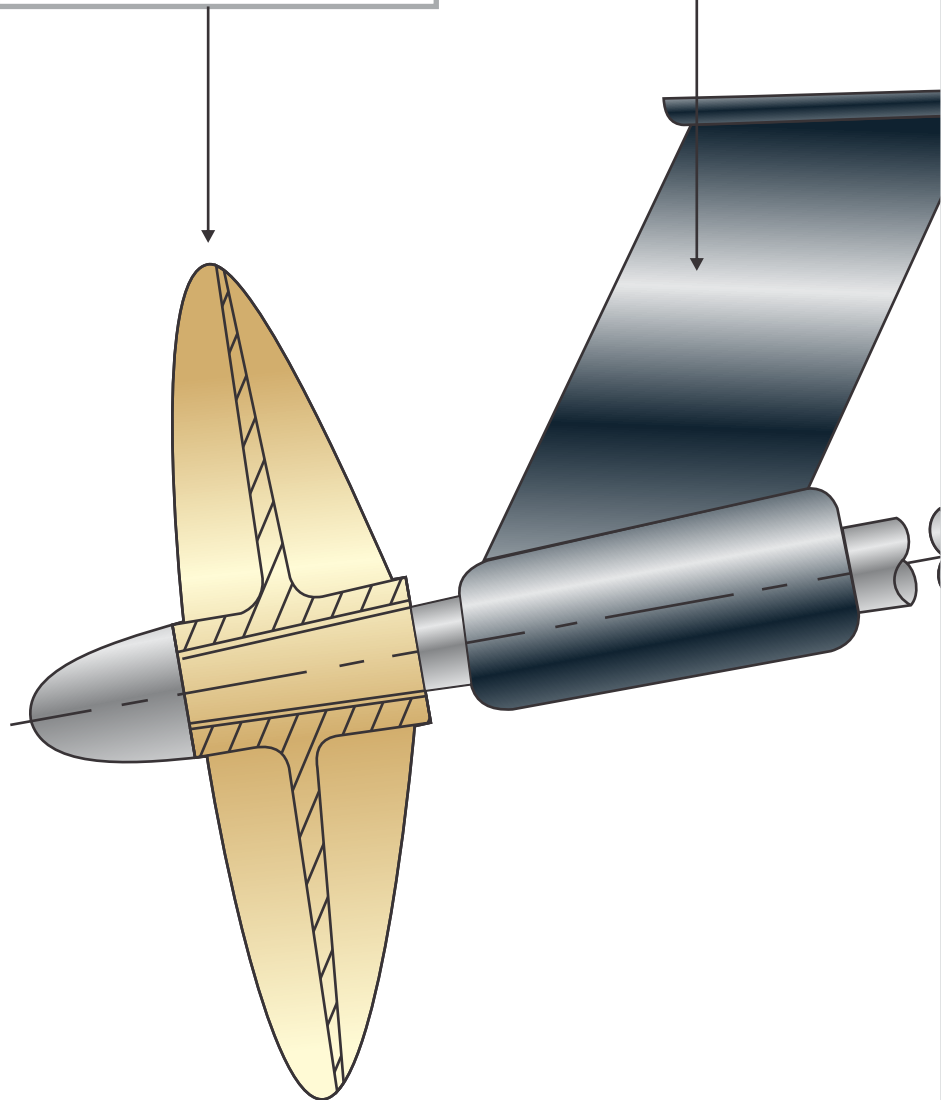
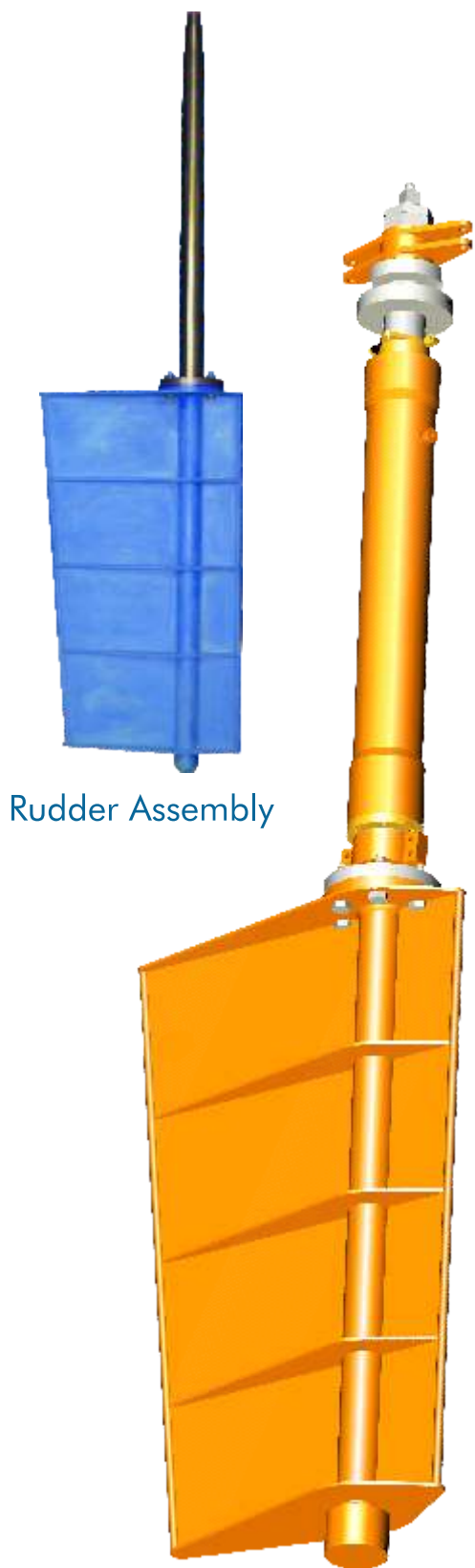
The GRP rudder trunk assembly is designed for hull installation. Its tube is manufactured by from high quality marine grade GRP tube.



Transom Rudder Assembly

These rudder assemblies are precision machined from one piece casting either in nickel aluminum bronze or Manganese bronze. Rudder housings are fitted with seal to prevent the ingress of water.





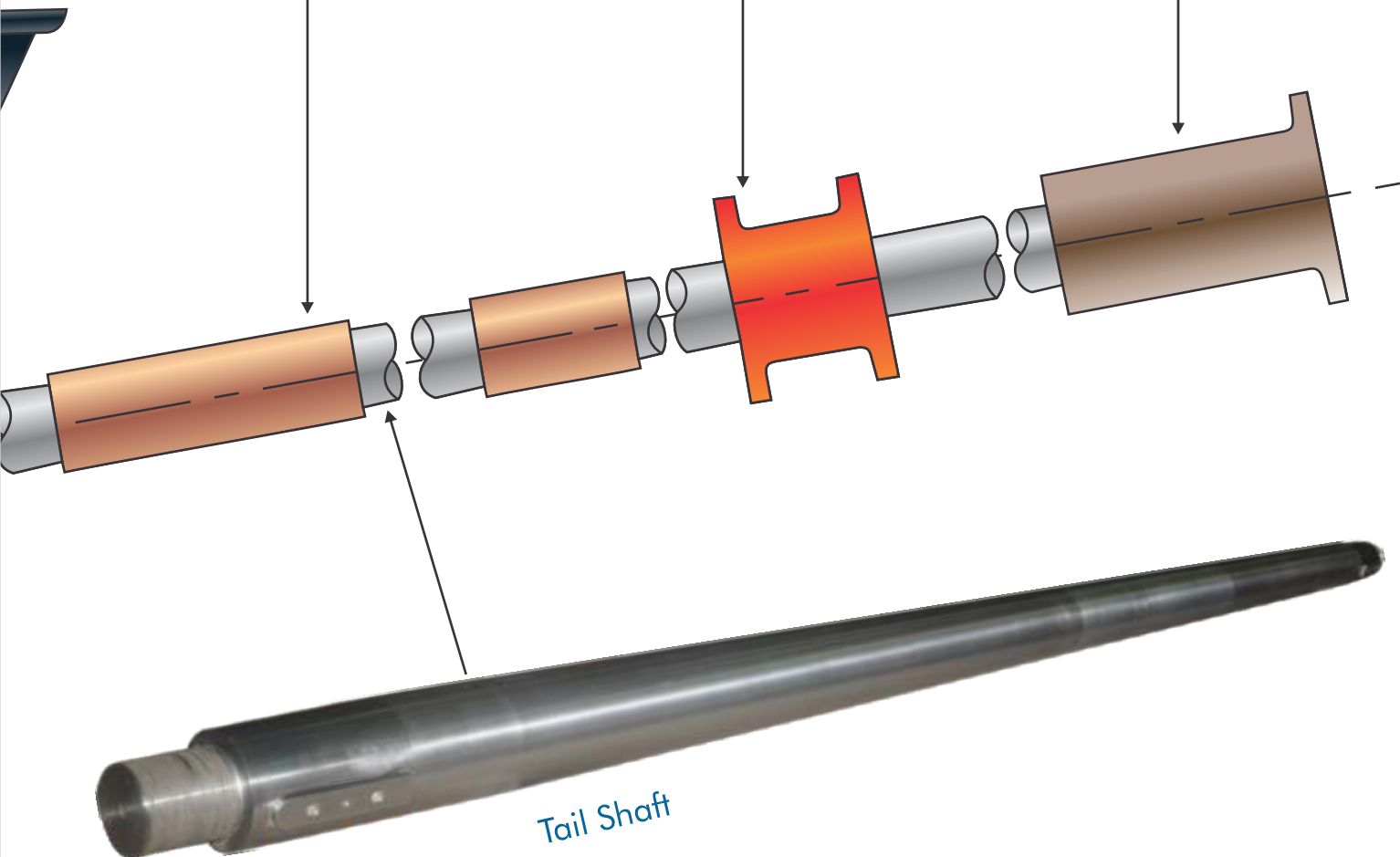
Stern Tube



Stern Tube - Gland



Coupling



We Design | We Build | We Deliver

SGP Nozzles: For Commercial Vessels

SGP Nozzles increases the thrust of the propeller. While comparing to open propellers, the nozzle propeller offers up to 25% more thrust.

Vessel Types:

- Tugs & Pusher Tugs
- Fishing Vessels
- Research Vessels
- Supply Vessels
- Dredger and Cable laying vessels
- Inland water vessels
- Vessels with Full AFT

Benefits

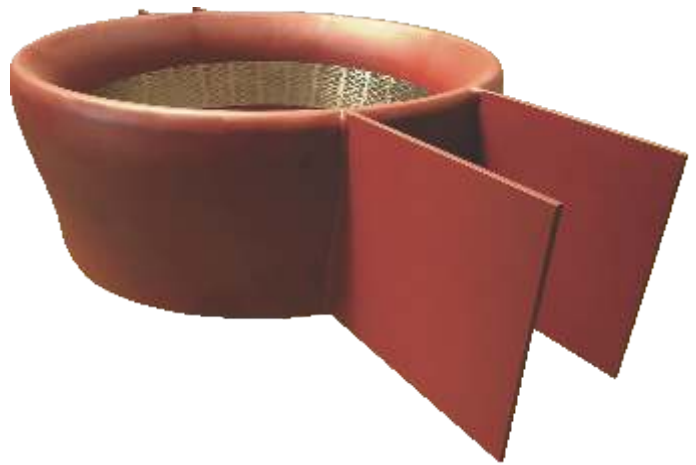
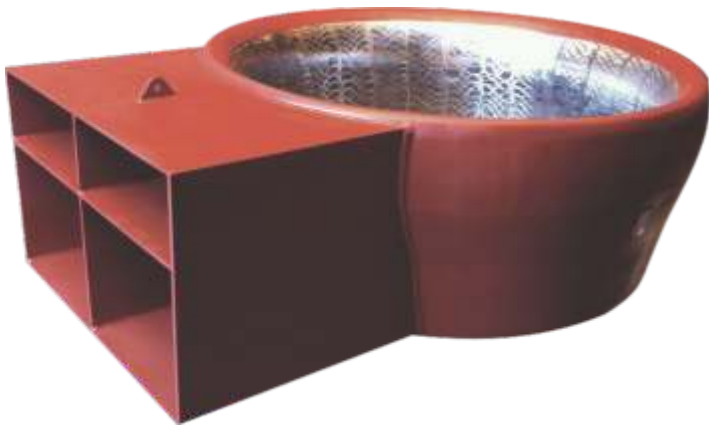
- Increase Thrust
- More pulling power
- Saving of fuel
- More speed from the same power input
- Decreases vibration level
- Propeller stay safe in ice



Range: From 700mm Dia to 3000mm Dia



ID: 2230mm | Length: 900mm | Material: MS ABS Grade A | Full SS316 Ring Inside



ID: 2000mm | Length: 850mm
Material: MS ABS Grade A | Full SS316 Ring Inside

Materials: Mild steel- ABS grade 'A' and
full SS316L Ring inside



Hub Bore Dimensions Propeller Hub Taper 1/16

Standard Taper	Dia	Small End (A)	Hub Length (B)	Moninal Width (C)	Keyway (D) Depth (D)
3/4"	0.608	0.410	2-1/4"	3/6"	3-32"
7/8"	0.710	0.712	2-5/8"	1/4"	1/8"
1"	0.811	0.813	3"	1/4"	1/8"
1-1/8"	0.913	0.915	3-3/8"	1/4"	1/8"
1-1/4"	1.015	1.017	3-3/4"	5/16"	5/32"
1-3/8"	1.116	1.118	4-1/8"	5/16"	5/32"
1-1/2"	1.218	1.220	4-1/2"	3/8"	3/16"
1-3/4"	1.421	1.423	5-1/4"	7/16"	7/32"
2"	1.624	1.626	6"	1/2"	1/4"
2-1/4"	1.827	1.829	6-3/4"	9/16"	9/16"
2-1/2"	2.030	2.032	7-1/2"	5/8"	5/16"
2-3/4"	2.233	2.235	8-1/4"	5/8"	5/16"
3"	2.437	2.439	9"	3/4"	5/16"
3-1/4"	2.640	2.642	9-3/4"	3/4"	5/16"
3-1/2"	2.843	2.845	10-1/2"	7/8"	5/16"
3-3/4"	3.046	3.048	11-1/4"	7/8"	5/16"
4"	3.249	3.251	12"	1"	1"
4-1/2"	3.796	3.798	11-1/4"	1-1/8"	3/8"
5"	4.218	4.220	12-1/2"	1-1/4"	7/16"
5-1/2"	4.640	4.642	13-3/4"	1-1/4"	7/16"
6"	4.749	4.751	15"	1-3/8"	1/2"
6-1/2"	5.145	5.147	16-1/4"	1-3/8"	1/2"
7"	5.541	5.543	17-1/2"	1-1/2"	9/16"
7-1/2"	5.973	5.939	18-3/4"	1-1/2"	9/16"
8"	6.332	6.334	20"	1-3/4"	6"

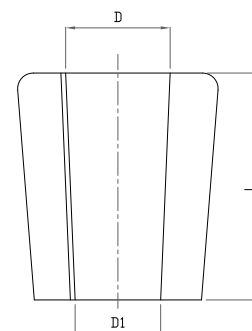
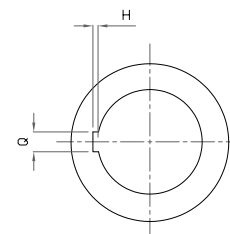
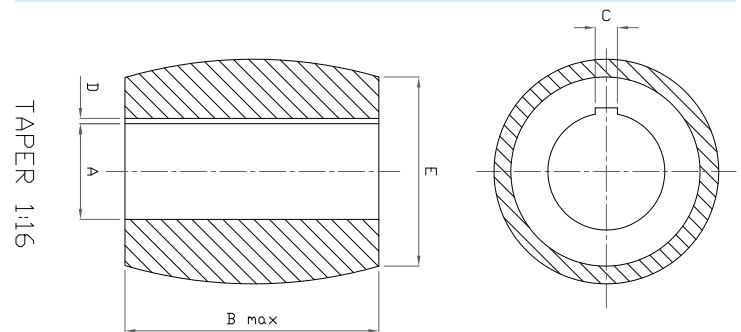
Propeller Hub taper 1/10

Shaft Dia	Big Dia. D	Small D1	Length L	Keyway
			B	H
20	20	15	6	3
25	25	19	6	3
30	30	22	8	4
35	35	26	10	4
40	40	30	12	4
50	50	34	14	5.5
45	45	38	14	5.5
55	55	42	16	5.5
60	60	46	18	5.5
65	65	50	18	5.5
70	70	54	20	5.5
75	74.5	57.5	20	6
80	79.5	61.5	22	6
85	84.5	65.5	22	7
90	89.5	69.5	25	7
95	94.5	73.5	25	7
100	99	77	28	7
110	109	85	32	7.5
120	119	93	36	8.5
130	129	101	36	9.5
140	139	109	36	9.5
150	149	117	36	9.5
160	159	125	40	10.5

SAE Standard Tapers

Notes:

1. Shaft & bores to 6" & diameter have taper of 3/4" ft. on the diameter 1/16" /inch 1 degree 47'23" angle with centerline.
2. Shaft & bores 6" and larger have taper of 1" ft. on diameter.
3. For intermediate size, refer to SAE handbook or contact us.
4. Propeller Hub length generally is less than maximum "B".
5. Oversea specification on request.

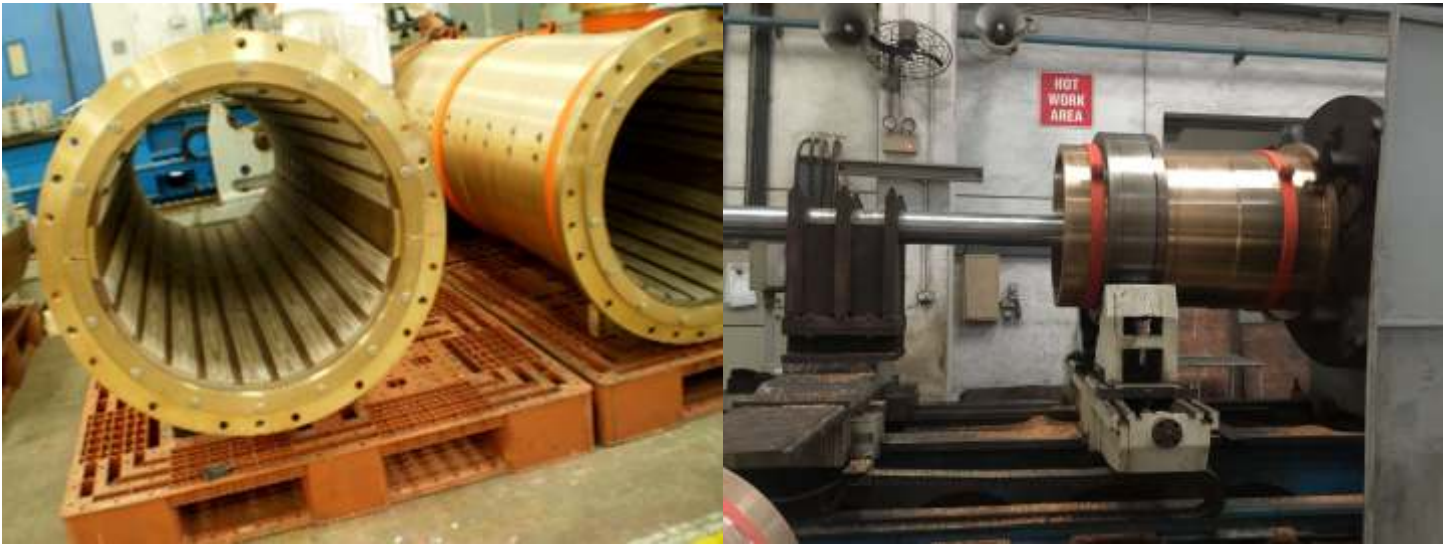


TAPER 1:10



NAVAL STERN TUBES

The largest supplier's & designers of Naval Stern Tube in India & Middle East



Specifications:

Housing: Bronze grade CAC 403 in two (2) halves or one round tube. Bearings: FEROFORM T12 with impregnated graphite in staves form or in tube. Largest size built is from 100mm to 820mm shaft diameters.

Designed & Manufactured in Singapore

Solely Distributed & Marketed by SGP in India & Middle East

SGP PROPULSION

rahul.patil@shreegajanan.co.in/vivek.patil@shreegajanan.co.in/rodney@sgppropulsion.com



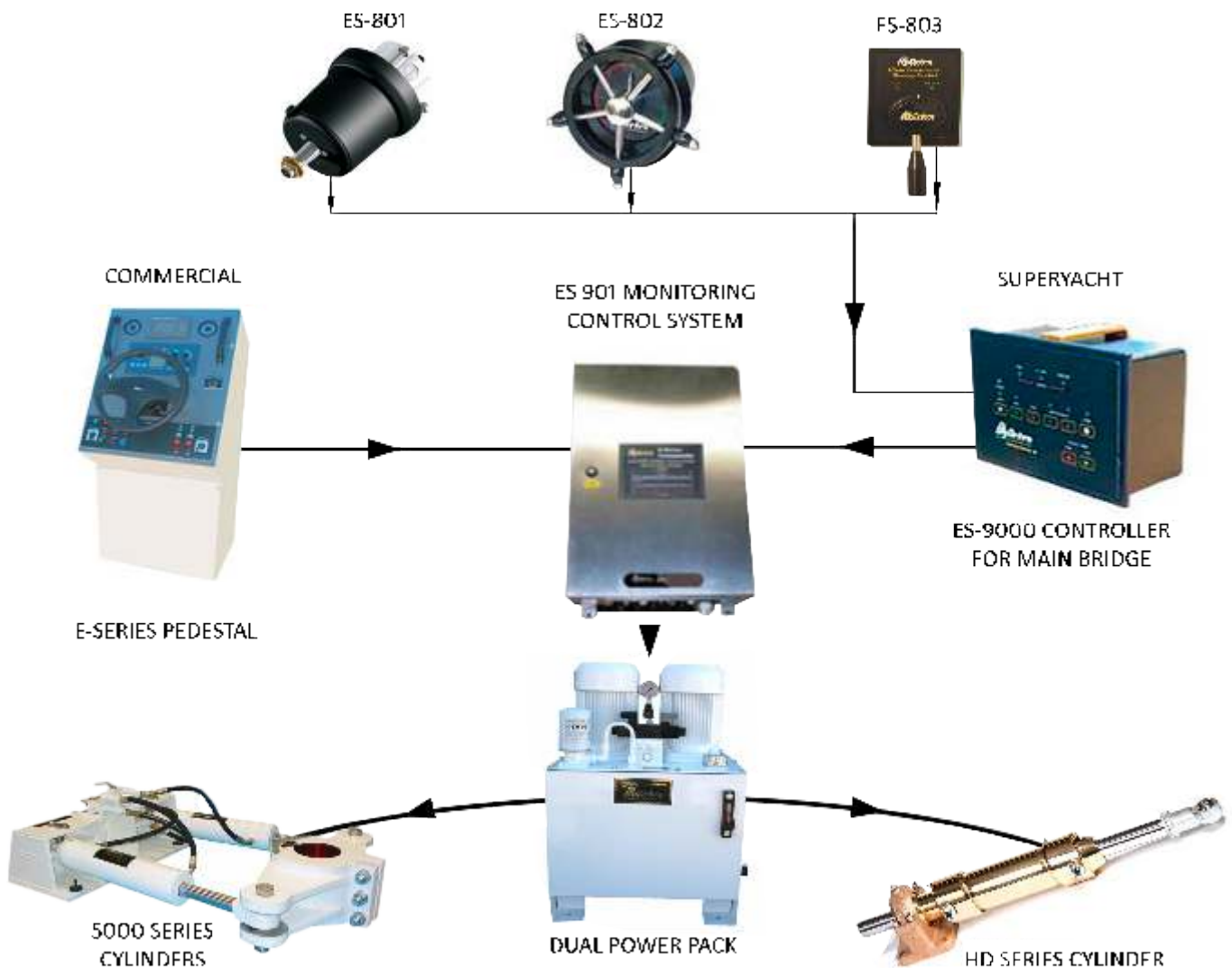
Hydraulic Steering System with Auto Pilot

Integrated E-Series

The E-Series Commander range of electronic steering control and systems equipment is designed for large modern vessels with electric power assisted steering & gives a modular control system which is both simple to install and highly reliable with steering status monitoring at all times.

Standard Features of Controller

- Run Stop Indicator
- Motor 1 or Motor 2 select
- High temperature alarm
- Low Oil Level Alarm
- Low Oil Pressure Alarm
- Phase fail Alarm
- Overload Alarm



Designed & Manufactured in Australia

Solely Distributed & Marketed by SGP in India & Middle East

SGP PROPULSION

rahul.patil@shreegajanan.co.in/vivek.patil@shreegajanan.co.in/rodney@sgppropulsion.com

Best Propulsion BV Tunnel Thrusters

Features:

- Power range of 20-1300kW.
- Electric, Hydraulic and Diesel Engine driven
- Steel, Aluminium, FRP (Polyester) and Wooden Hulls.
- All class certifications are possible.



Well mounted azimuth thrusters

Features:

- Rugged and compact design.
- Available with built-in hydraulic clutch.
- Flanged on hydraulic pump(s).
- No "V" belts.
- Available with hydraulic brake.
- Available with nozzle.
- Round or rectangular well.
- Nibral propeller.
- Z-drive / horizontal input shaft.

Complete Propulsion Unit

Range 150-1000kW (204-1360ph), bigger on request.

Features:

- Manual operation with steering wheel.
- Hydraulic powered manual operated steering wheel.
- Electric-hydraulic systems with hydro-motor on Best Propulsion steering gear.
- Excellent maneuver by 360 degrees thrust rotation.
- Joystick (Non-follow up).
- One-lever controller for combined follow-up steering, disengaging clutch and engine speed control.
- Optional vertical retracting function.
- Optional tilt function.



Designed & Manufactured in Netherlands
Solely Distributed & Marketed by SGP in India & Middle East
SGP PROPULSION

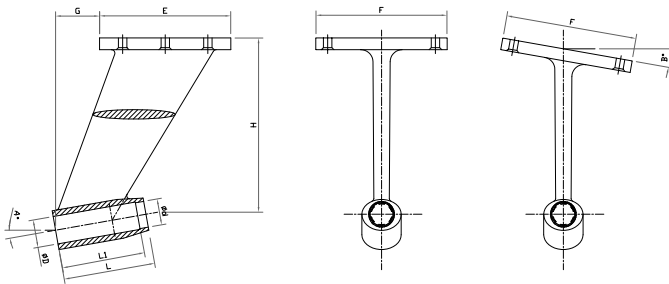
rahul.patil@shreegajanan.co.in/vivek.patil@shreegajanan.co.in/rodney@sgppropulsion.com

P & A Brackets:

We offer a wide range of Platform type & Glass Type “p” brackets to cover the requirement of power craft & cruisers.

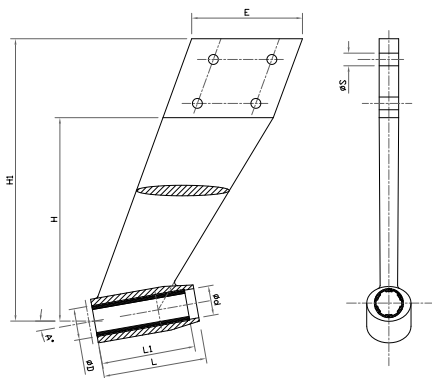
Platform Type ‘P’ Brackets

We Custom design Platform type ‘P’ Brackets usually made of aluminum bronze or stainless steel to meet the hull shape of single & twin screw power craft, cruiser & sailing Boat. The ‘P’ Brackets are designed for the smoother water flow on the propeller.



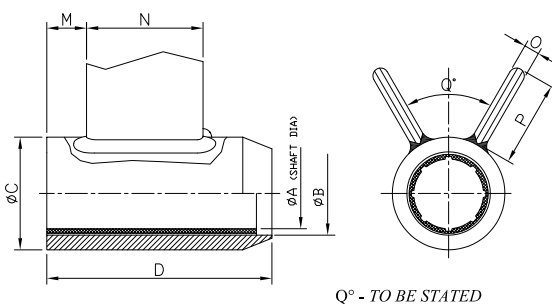
Glass Type ‘P’ Bracket

Designed for sailing boats and powerboats, this type of brackets has the advantage of being adjustable in height and angle at the installation. They are made in Aluminum bronze and used for fiber yachts to meet the requirement of hull shape & to enhance the water flow.



Steel Struts

Steel Struts also called as Shaft brackets or ‘A’ brackets are manufactured as single cast in special material such as steel, stainless steel, mild steel, Aluminum or Aluminum bronze. The shape of the bracket is custom designed to meet the hull shape & to guarantee the lowest drag.



Facility:

With 40 years of experience, SGP enables manufacturing and delivery of complete range of Propellers & Stern Gears in short span of time limits and with high quality & reliability. Our production facility built up on area of approximately 3000 sq meters. It includes our own Advance foundry Shop, Machining Department, Complete CNC Shop & Stock Keeping section which enables us to deliver bulk orders within committed span of time.

Design & Pattern making

Our expertise & technical team always design the product with the view of meeting high performance requirements. Our own Pattern making shop enables us to review our design for the optimum performance. This has led us to achieve accuracy & have reduced production lead time.

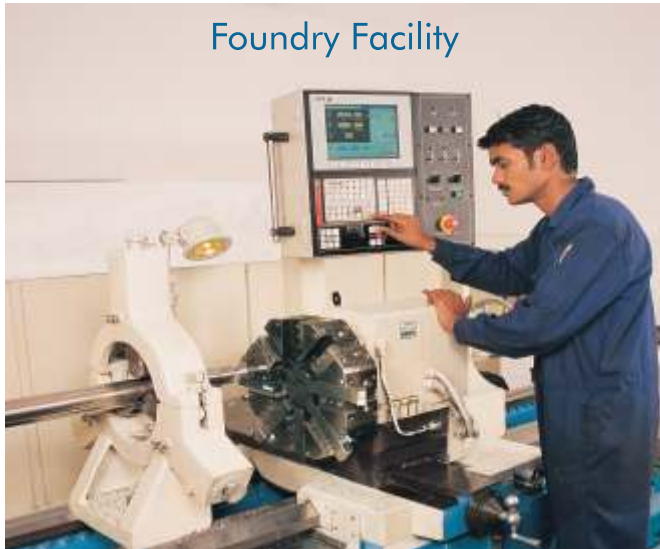
Molding & Casting

We offer Propellers & other Propulsion components with mixture of alloys which includes Manganese bronze, Nickel Aluminum bronze, and Aluminum & Gun Metal. Our foundry is equipped with electrical furnaces with melting capacity of 5 tons for smoother & accurate castings. Utmost care is taken while molding so as to make sure that there is no porosity of inclusions in the propellers. Prior to pouring all liquid metal chemical analysis is carried out by Spectrometer to meet the desired specification of metal.



Machining & fabrication

our fully equipped machine shop carry out all operations activity for machining of products, with over 12 machines including CNC lathes, CNC VTL, Keys eater, Milling, CNC horizontal boring & auxiliary machines ensures the necessary capacity for machining of all our products.



Foundry Facility

CNC lathe for Shaft
up to 5 Meter



VTL for Propeller Machining
Up to Dia 3000 Meter



VMC Propeller Machining Center



VTL CNC for Propeller Boring

Grinding & polishing

a dedicated & skilled manpower with latest technology grinding facility to meet the tolerances of propellers as per ISO Class S, I & II as per the application. We have Vertical Machining center for our Specialize S Class Propellers grinding. Our Spectrometer, Balancing machines provide an added edge of advantage in terms of accuracy & quality.



Quality & Inspection

We have In-house facility to carry out inspection of all our products which includes Spectrometer, Tensile testing M/C, Hardness Testing M/C, Impact Testing M/C, Pitchometer & SCHENK Dynamic Balancing M/C, and Static Balancing. Equipments are periodically calibrated as per ISO standard.

The quality and the controls within the production process have always been understood & maintained at SGP through continuous research & development program for the Design & production processes to ensure that highest quality & accuracy by adapting necessary work method from International Certification Bodies and ISO 9001:2008 for the Quality Management System.



Spectrometer for Material Testing



Dynamic Balancing up to Dia 1.5 Meter



Inspection of Propeller Pitch

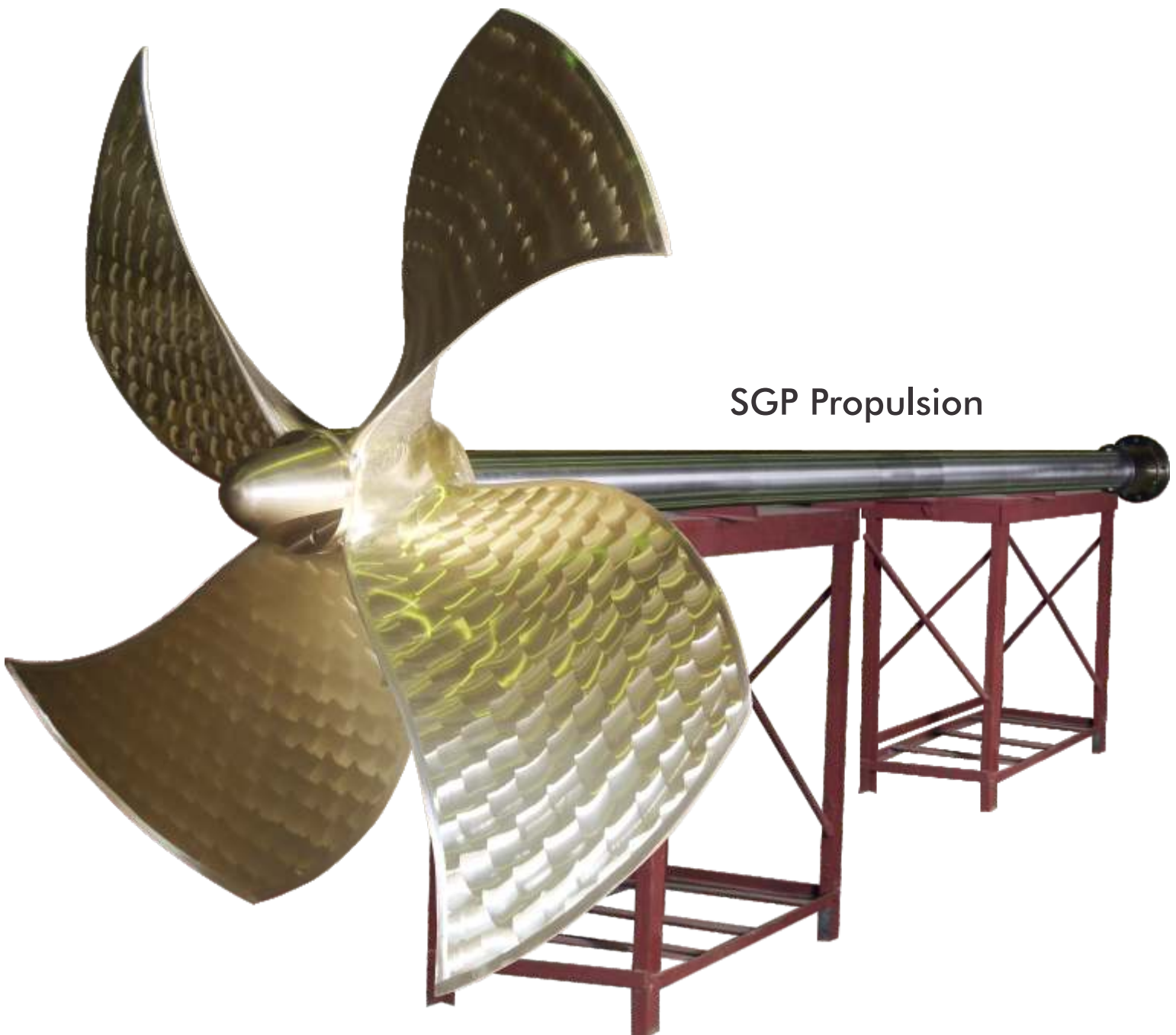
Quality Assurance

SGP is dedicated to maintain the quality of product even before manufacturing. From the Raw material Stage till conversion into finished product we have a team of Quality Assurance which continuously check & maintain the quality of product in every stage & process. Well maintain records & inspection analysis report provides confidence that quality will be fulfilled.



Contract Manufacturing:

Although we are specialize in customized designs & products, we have a wide range of standard Stern gear, Rudder, Nozzles & Shafts which are the part of our continuous production batch & kept in stock for the orders which are irrelevant to market position. It enables us to tackle market risk & deliver bulk orders within very less cycle time. Our contract manufacturing add milestone to our business.





Finish Propeller & Castings Stock



Rudder Trunk Tube Arrangements
For stock Purpose



Stern Tube Arrangements
For stock Purpose



Rudder Trunk Stock



◀ Machining of Shaft Up to Dia 250MM
& length 10 Meter

Shaft & Stern Tube Pipes Arrangements
for stock Purpose ▶



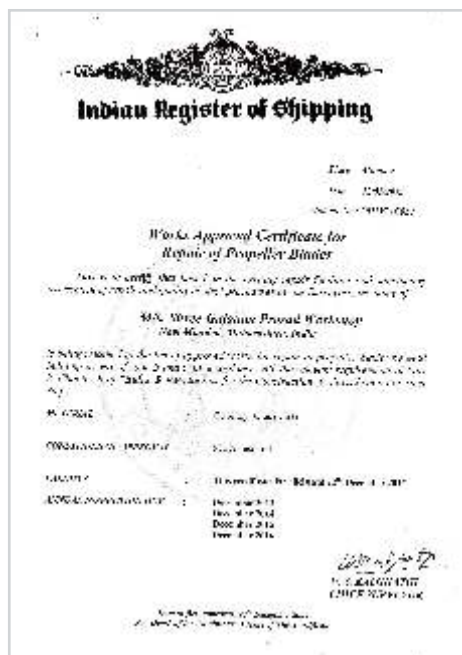
◀ Rudder Stock Arrangements for Tug Boats

Kort Nozzles for Tug Boats



Quality Certifications

SGP has obtained work approval certification from all major classification societies such as ABS, NKK, LR, DNV, and IRS. Also we provide technical advice on compliance with certification requirement.



SGP Propulsion

Plot No. 35-D & 36, Sector 02, Dronagiri, Tal-Uran, Dist: Raigad, Navi Mumbai (India) 400 702.

Tel: 0091 - 22 - 2724 0986 / 87 / 88 / 89 | FAX: 0091 - 22 - 27240988

E-mail: info@shreegajanan.co.in | Web: www.shreegajanan.com

Customer Details

Customer : _____ Tel : _____
Address : _____ Fax : _____
_____ Email : _____

Vessel/ Hull Details

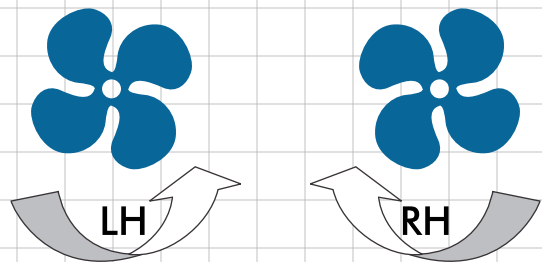
Vessel Name : _____ Builder : _____ Model : _____
Vessel Type : _____ Material : _____ Bow Shape : _____
Displacement : _____ Speed : _____ : _____
Full Load : _____ Light Load : _____ LOA (Overall : _____
Displacement Displacement Length)
Society Approval Required : _____

Engine Data

Manufacturer : _____ Model : _____ Year : _____
Rated Power : _____ Hp _____ RPM : _____ Reduction Ratio : _____
Gearbox Model : _____ No. of Engines : _____
Expected Speed (at _____ Tons Displacement) : _____

Propeller Data

Prop. Diameter : _____ mm or inch
Prop. Pitch : _____ mm or inch
DAR : _____
Material : _____
Single Screw : RH LH
Twin Screw : PORT STBD
No. of Blades : _____
Propeller Series : _____



Shaft Data

Diameter 1 : _____ mm or inch
Diameter 2 : _____ mm or inch
Length : _____ mm or inch
Material : _____ mm or inch
Taper : _____ mm or inch



Above information will be used in the preparation of Estimate or Design by SGP.

Signed : _____

Date : _____

SGP Manufacturing Head Quarter and Office:

SHREE GAJANAN PRASAD

Plot No. 35-D & 36, Dronagiri, Sector -02, Tal-Uran

Dist: Raigad, Navi Mumbai - 400702, (India)

☎: 0091 - 22 - 2724 0986 / 87 / 88 / 89

✉: 0091 - 22 - 2724 0988

☎: +91 9819994020 /+91 9821596491

✉: info@shreegajanan.co.in

✉: rahul.patil@shreegajanan.co.in

✉: vivek.patil@shreegajanan.co.in

🌐: www.shreegajanan.com

SGP Singapore Office:

SGP PROPULSION PTE LTD

336 Smith Street #05-303

New bridge Center Singapore 050336

☎: +65 6384 3848

✉: sales@sgppropulsion.com

✉: rodney@sgppropulsion.com

✉: rahul@sgppropulsion.com

✉: vivek@sgppropulsion.com

🌐: www.sgppropulsion.com

SGP Dubai Office:

SGP PROPULSION MARINE SERVICES

Unit No. DY45-2, Plot No. 326-288

Al Jadaf (600 SQF), PO Box: 624213

Dubai-UAE

☎: +971527993487/+971527994507

✉: rahul.patil@shreegajanan.co.in

✉: vivek.patil@shreegajanan.co.in

🌐: www.shreegajanan.com

SALES REPRESENTATIVE FOR SGP

Australia: Western Australia

Karen De Rozario

✉: karen@lytewateraustralia.com.au

Indonesia: Jakarta

Surya Prihadi

✉: surya@suryaprihadi.com

Authorized Sales & Service Center



IACS International Association of Classification Societies

Accreditation: Our high class Marine propulsion system has following accreditation from International Association of Classification Societies.



IRCLASS Indian Register of Shipping